

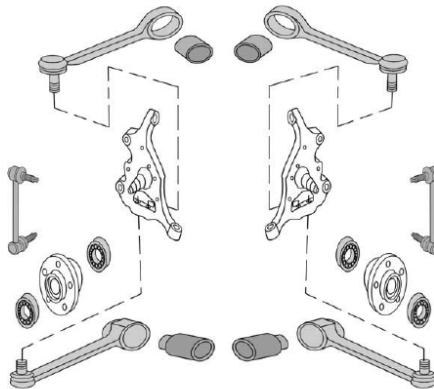


MERCEDES REPLACEMENT OF FRONT LOWER ARMS AND STEERING GEOMETRY CHECK

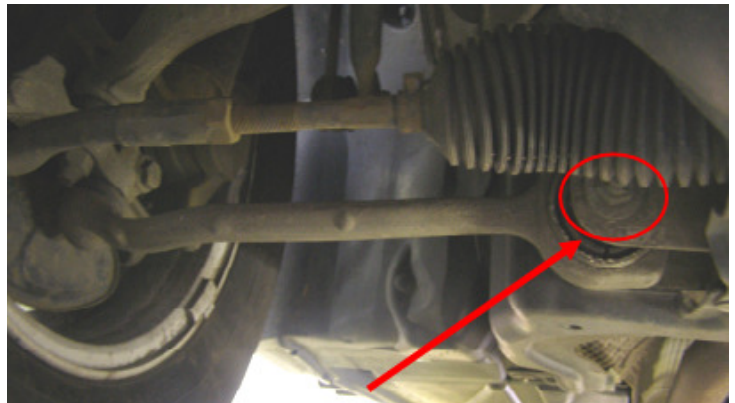
Delphi Parts:

TC1281 – TC1282	W203 C class, 00>
TC1385 – TC1386	C219 CLS class, 04>
TC1383 – TC1384	C219 CLS class, 04>
TC1494 – TC1495	W220 S class, 98>
TC1496 – TC1497	W220 S class, 98>

NB: if the inner bolt removed from the arm is a plain shafted bolt you may have to purchase Mercedes part number adjustable bolt kit A 000 330 00 18 to achieve the correct camber angle.



- Remove inner mounting nut and bolt. (Note: It is important **not** to rotate the bolt as it may be keyed into the bush, only turn the nut)





BRAKING STEERING AND SUSPENSION TECHNICAL BULLETIN

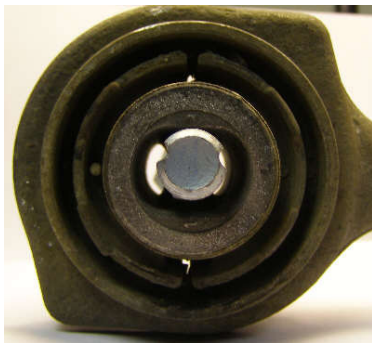
Page 2 of 5



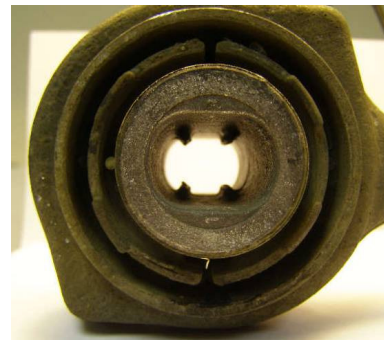
- Split the outer joint using a suitable ball joint splitter
- Remove arm
- Note position of original bolt in bush

Fitting the new arm is the reverse of the above instructions, but please note the following points before starting.

The inner bush has 3 positions for the bolt to be fitted, it is recommended to refit in the same position as the old arm as a starting point before checking alignment and adjusting as necessary.



Inner bush showing 2 pairs bolt locators



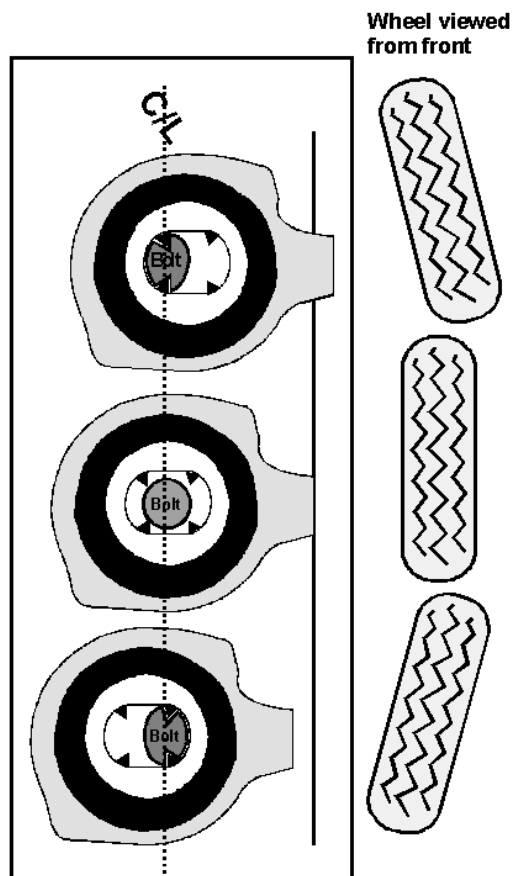
Shows bolt in centre position



**Mercedes part number adjustable bolt kit
A 000 330 00 18.**



The effects of the 3 bolt positions on the camber angle can be seen from the drawing below:



Once the lower arms have been replaced, it will be necessary to have the vehicles geometry checked and set to manufacturer's specification. This is a complex procedure and can be done by yourself if you have the correct measuring equipment or a main dealer workshop if you do not.



BRAKING STEERING AND SUSPENSION TECHNICAL BULLETIN

Page 4 of 5

N.B.

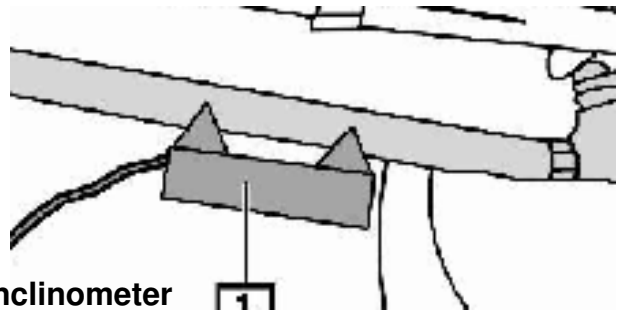
Before you start to check and adjust the steering geometry you must check the following:

- Ensure the vehicle has a full tank of fuel,
- The spare wheel and the wheel change tooling are present.
- Check tyre pressures
- Suspension height
- Check suspension springs for damage

The specialist tooling required is as follows:



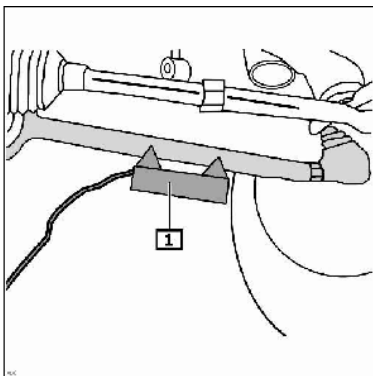
4 wheel alignment station



Inclinometer [1]

Technical information required:

The following data is an extract from Delphi Technical Data



Check and record the front track control angle using an inclinometer

Make sure the contact points of the measuring tool are clean

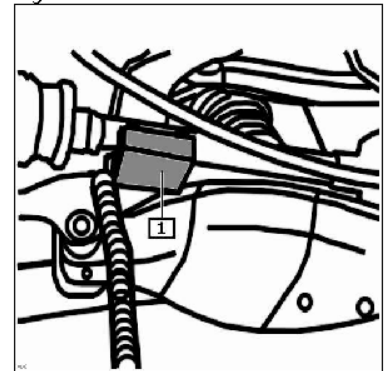


BRAKING STEERING AND SUSPENSION TECHNICAL BULLETIN

Check and record the rear drive shaft angle using an inclinometer

Make sure the contact points of the measuring tool are clean.

Once the angles of the front and rear suspension are measured then you can refer to the run out allocation table to determine the correct camber angle.



In the example below, Front angle = 13.1o, Rear angle = 5.1o therefore the camber angle should be set to 9o 44 minutes

Front axle angle

Vehicle level 13,4°	46,8	10° 02'	9° 59'	9° 55'	9° 53'	9° 49'	9° 45'	9° 41'	9° 38'	9° 34'	9° 31'
Vehicle level 13,1°	46,9	10° 02'	9° 58'	9° 55'	9° 52'	9° 48'	9° 44'	9° 41'	9° 37'	9° 34'	9° 30'
Vehicle level 12,8°	45,0	10° 02'	9° 58'	9° 54'	9° 51'	9° 47'	9° 44'	9° 40'	9° 37'	9° 33'	9° 29'
Vehicle level 12,8°	43,1	10° 01'	9° 57'	9° 54'	9° 50'	9° 47'	9° 43'	9° 40'	9° 38'	9° 32'	9° 29'
Vehicle level 12,2°	41,3	10° 00'	9° 57'	9° 53'	9° 50'	9° 46'	9° 43'	9° 39'	9° 35'	9° 32'	9° 29'
Vehicle level 11,9°	39,4	10° 00'	9° 56'	9° 53'	9° 49'	9° 46'	9° 42'	9° 38'	9° 35'	9° 32'	9° 29'
Vehicle level 11,6°	37,5	10° 00'	9° 56'	9° 53'	9° 49'	9° 45'	9° 42'	9° 38'	9° 35'	9° 32'	9° 29'
Vehicle level 11,3°	35,6	10° 00'	9° 58'	9° 53'	9° 49'	9° 45'	9° 41'	9° 38'	9° 35'	9° 32'	9° 29'
Vehicle level 11,0°	33,6	9° 59'	9° 55'	9° 52'	9° 48'	9° 44'	9° 41'	9° 38'	9° 35'	9° 32'	9° 29'
Vehicle level 10,7°	31,9	9° 59'	9° 55'	9° 52'	9° 48'	9° 44'	9° 41'	9° 36'	9° 35'	9° 32'	9° 29'
Vehicle level 10,4°	30,0	9° 59'	9° 55'	9° 52'	9° 48'	9° 44'	9° 41'	9° 36'	9° 35'	9° 32'	9° 29'
Vehicle level 10,1°	28,1	9° 58'	9° 55'	9° 51'	9° 48'	9° 44'	9° 41'	9° 38'	9° 35'	9° 32'	9° 29'
Vehicle level 9,8°	26,3	9° 58'	9° 55'	9° 51'	9° 48'	9° 44'	9° 41'	9° 38'	9° 35'	9° 32'	9° 30'
Vehicle level 9,5°	24,4	9° 58'	9° 55'	9° 52'	9° 48'	9° 45'	9° 41'	9° 38'	9° 36'	9° 33'	9° 31'
Vehicle level 9,2°	22,5	9° 58'	9° 55'	9° 52'	9° 49'	9° 45'	9° 42'	9° 39'	9° 38'	9° 34'	9° 32'
Vehicle level 8,9°	20,9	9° 58'	9° 55'	9° 52'	9° 49'	9° 46'	9° 43'	9° 40'	9° 37'	9° 34'	9° 32'
(mm)	29,7		32,5	35,4	38,2	41,0	43,9	46,7	49,5	52,4	55,2
Rear axle angle	Vehicle level 3,8°	Vehicle level 3,9°	Vehicle level 4,2°	Vehicle level 4,5°	Vehicle level 4,8°	Vehicle level 5,1°	Vehicle level 5,4°	Vehicle level 5,7°	Vehicle level 6,0°	Vehicle level 6,3°	

Failure to set the suspension correctly could potentially result in a dangerously handling vehicle, and result in tyre scrub and also potential refusal of a warranty claim.